

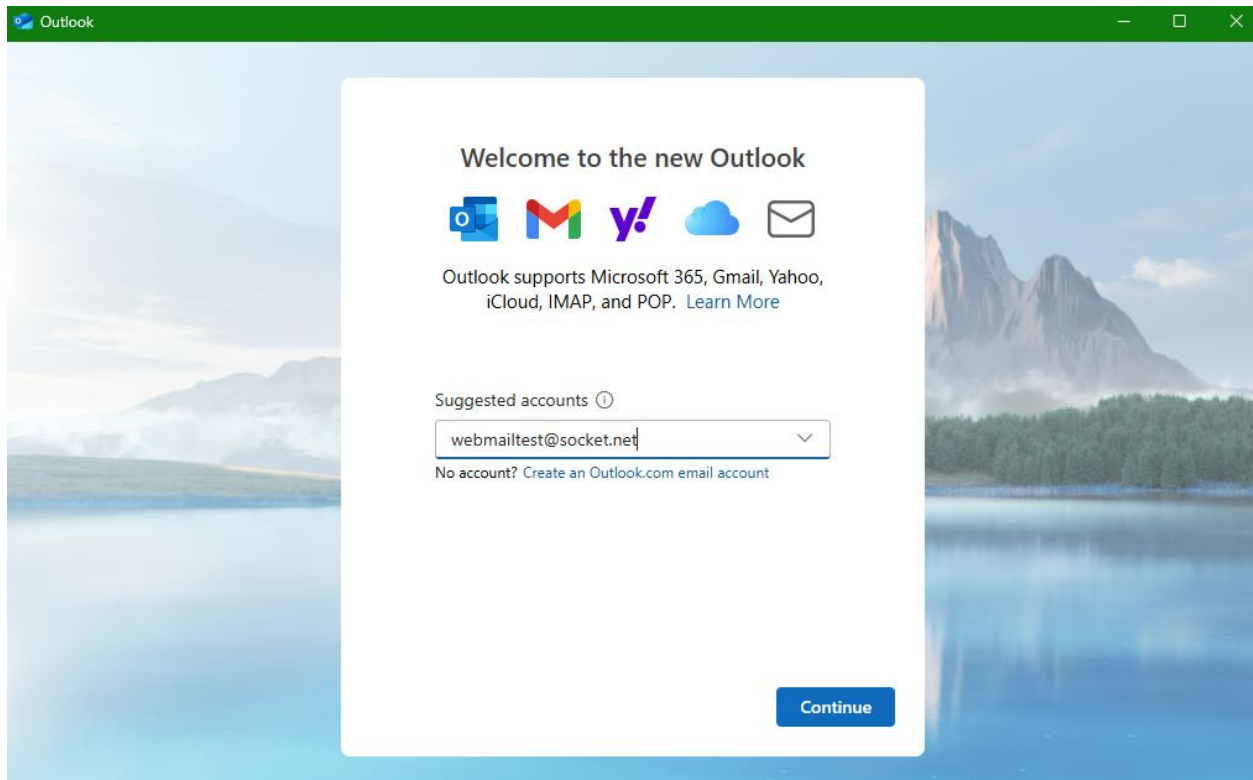
Setting up Outlook (new) for socket.net mail accounts -

Note: These instructions are based upon emails which end in 'socket.net'. If you are using a socket email which ends in a different domain (the part which comes after the '@' symbol on your email), then please follow through the same instructions. However, you will replace any portion of the instructions which contains 'socket.net' with the portion of your email which comes after the '@' symbol.

1) Open the Outlook (New) Application

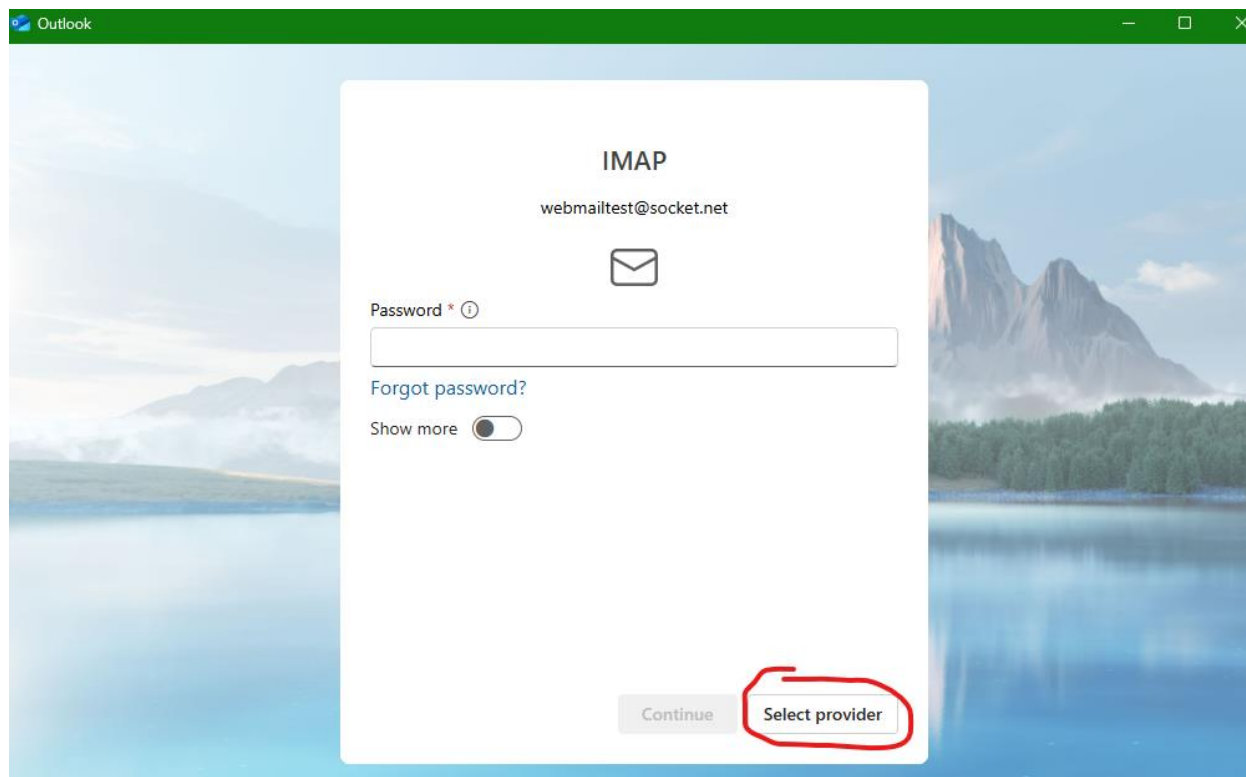
You should be prompted to add an account. If you already have pre-existing email addresses, you will have to go to mail -> accounts -> add a new account

2) Enter the full email address. E.g. - webmailtest@socket.net

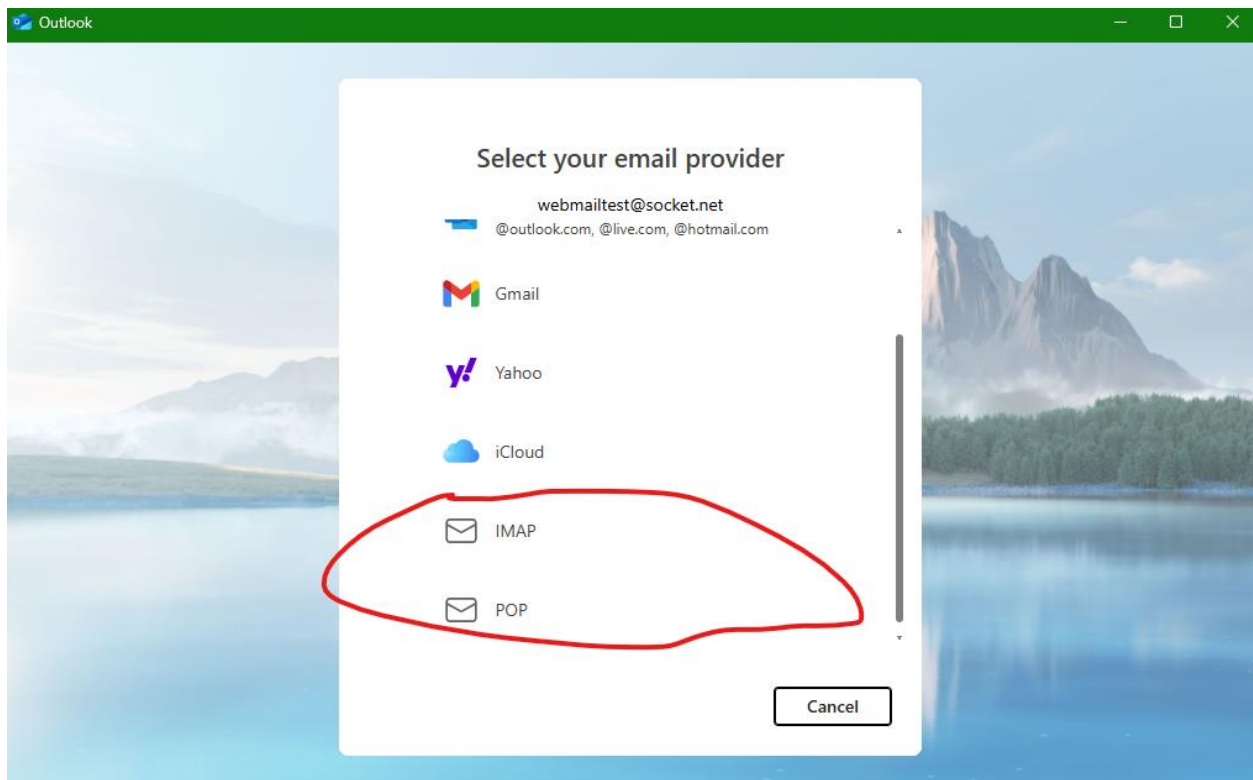


This will then attempt to add the account automatically. This may fail, but don't worry if it does.

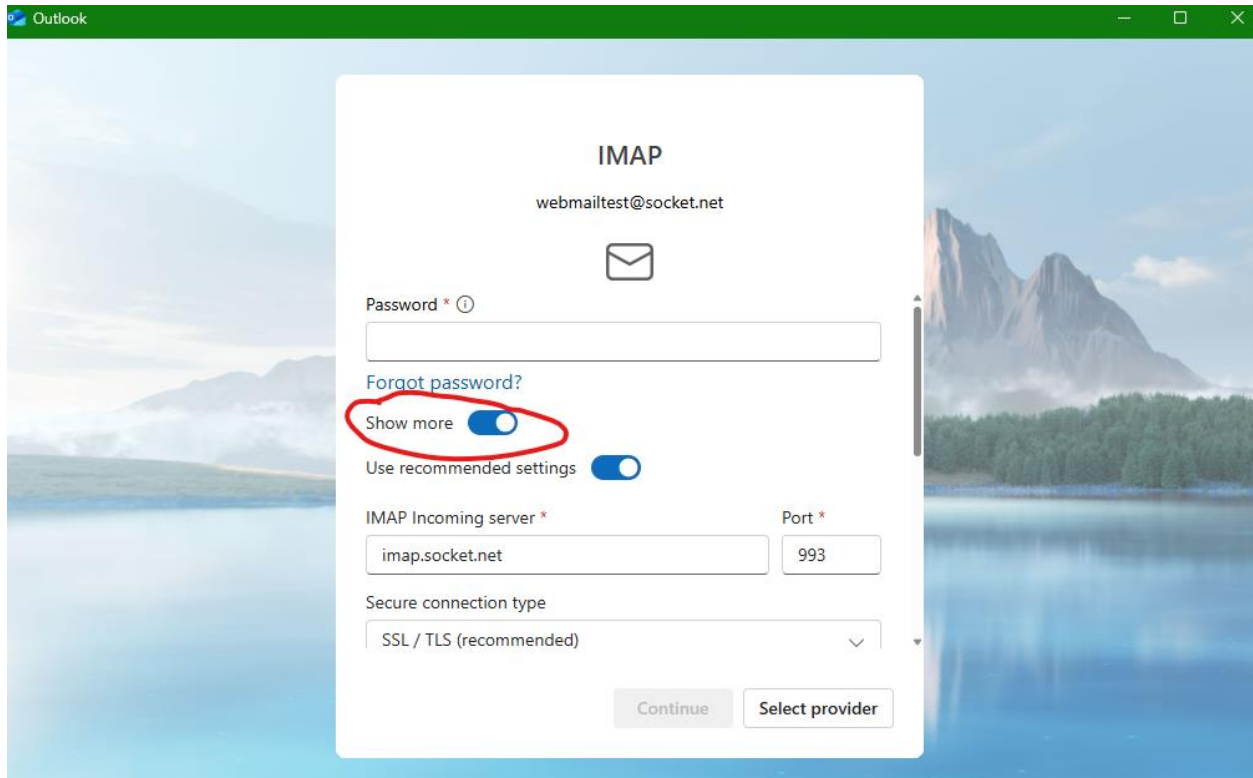
3) When you get prompted for a password, instead, click the button at the bottom-right of the application which says "Select Provider"



4) On the next screen, scroll down the provider list until you see "IMAP" or "POP" (This depends on your preference. Although IMAP is typically preferred, please check with your old client to determine if it was POP or IMAP). Click on the proper, corresponding option for IMAP/POP.



5) On the next screen, click the slider for "Show more".



6) This will open your email server-side settings. Please turn off the "Use recommended settings" and fill in with the corresponding information;

For IMAP clients -

Password = Your email password

IMAP Incoming server = mail.socket.net

Incoming port = 993

Incoming Secure connection type = SSL/TLS

SMTP username = your FULL email address

SMTP password = your email password

SMTP Outgoing server = mail.socket.net

Outgoing port = 465

Outgoing Secure connection type = SSL/TLS

For POP clients -

Password = Your email password
IMAP Incoming server = mail.socket.net
Incoming port = 995
Incoming Secure connection type = SSL/TLS

SMTP username = your FULL email address
SMTP password = your email password

SMTP Outgoing server = mail.socket.net
Outgoing port = 465
Outgoing Secure connection type = SSL/TLS

You may ALSO use the following configurations -
(Please use this for emails which do not end in [‘@socket.net’](mailto:@socket.net)).

For IMAP clients -

Password = Your email password
IMAP Incoming server = mail.socket.net
Incoming port = 143
Incoming Secure connection type = STARTTLS (or none)

SMTP username = your FULL email address
SMTP password = your email password
SMTP Outgoing server = mail.socket.net
Outgoing port = 587
Outgoing Secure connection type = STARTTLS (or none)

For POP clients -

Password = Your email password

IMAP Incoming server = mail.socket.net

Incoming port = 995

Incoming Secure connection type = SSL/TLS

SMTP username = your FULL email address

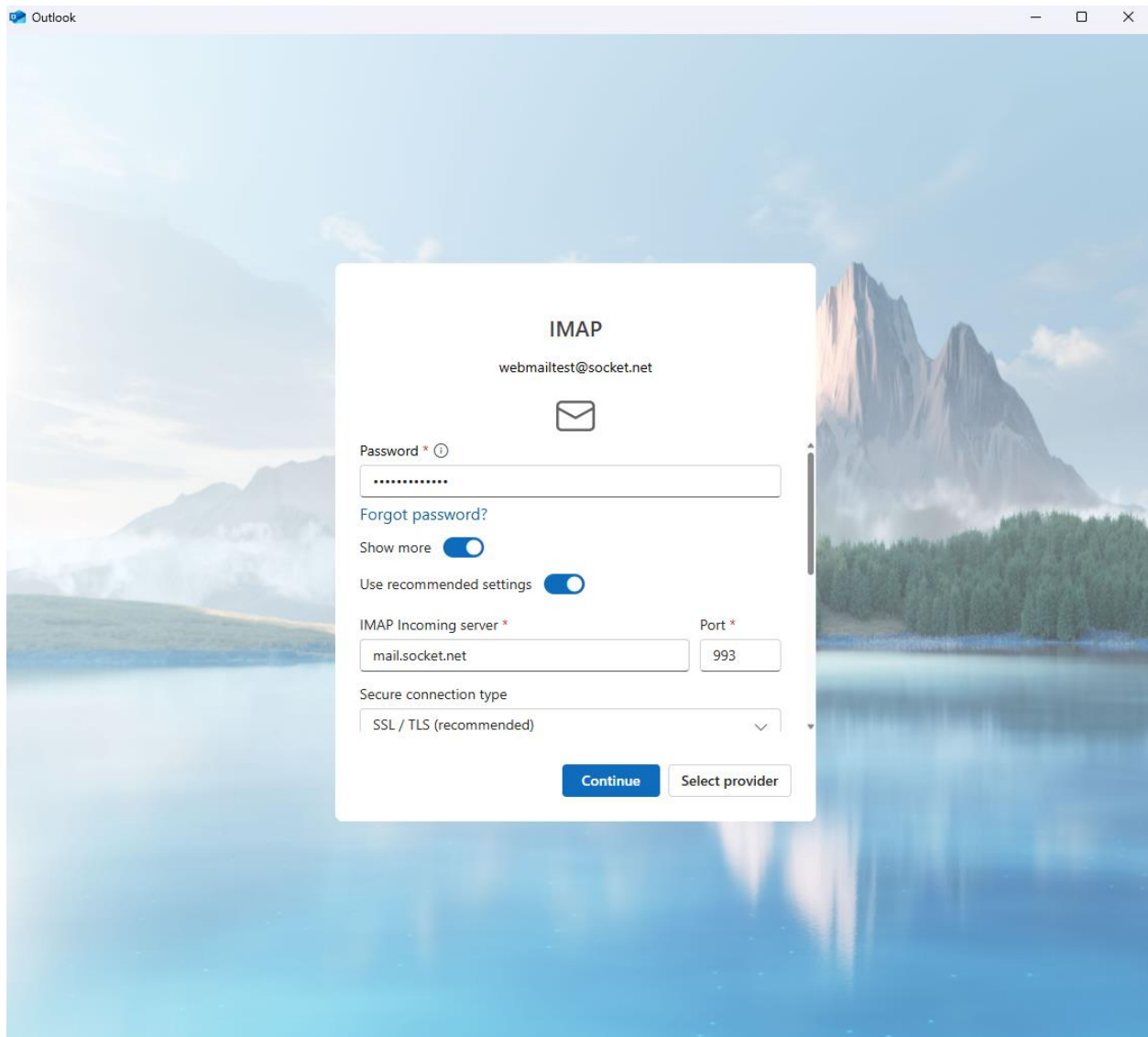
SMTP password = your email password

SMTP Outgoing server = mail.socket.net

Outgoing port = 465

Outgoing Secure connection type = SSL/TLS

It should look something like this, but respective to either IMAP/POP accounts ->




The screenshot shows the Outlook application window with a scenic background of mountains and a lake. A central dialog box titled "IMAP" is open, displaying the email address "webmailtest@socket.net" and an envelope icon. The dialog contains the following fields and controls:

- Password ***: A text input field with a password icon and a help link.
- Forgot password?**: A link to reset the password.
- Show more**: A toggle switch.
- Use recommended settings**: A toggle switch.
- IMAP Incoming server ***: A text input field containing "mail.socket.net".
- Port ***: A text input field containing "993".
- Secure connection type**: A dropdown menu with "SSL / TLS (recommended)" selected.
- Continue**: A blue button.
- Select provider**: A button.

IMAP

webmailtest@socket.net



SMTP username *

SMTP password

Enter your SMTP password if it differs from your IMAP/POP password.

SMTP Outgoing server * Port *

Secure connection type

Continue

Select provider

7) Click 'next', or 'continue'. This should then let Outlook (new) set up your account

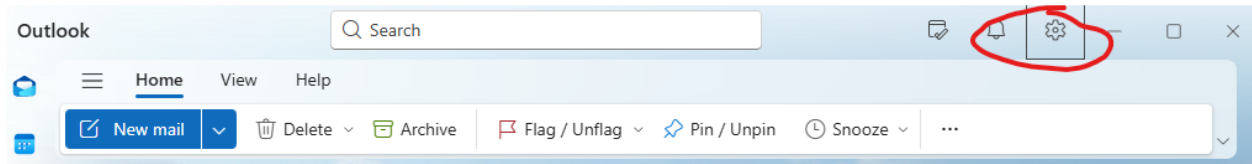
8) Finally, it is up to you as to whether you would like to send optional data to Outlook, and it's recommended to follow along with the included tutorial which Outlook (new) provides if this is new to you.

9) Congratulations! Your socket email should be ready for use on Outlook (new)

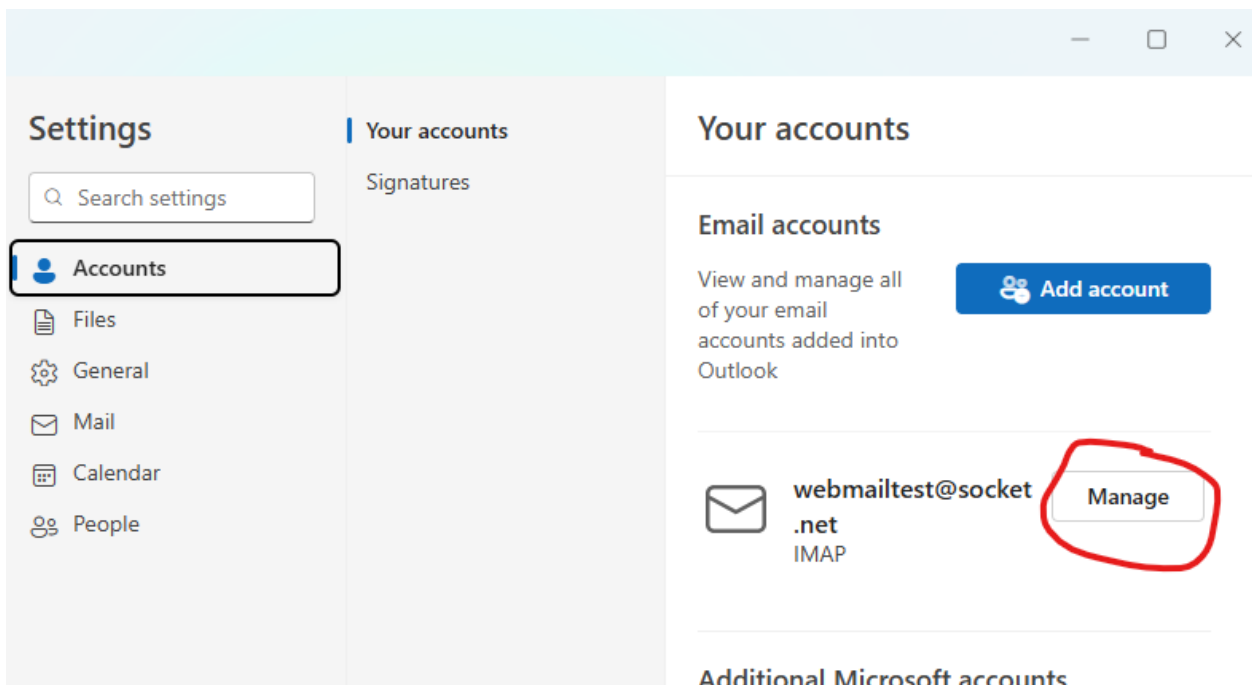
Note:

If you are editing the server settings of a pre-existing account, please check the following.

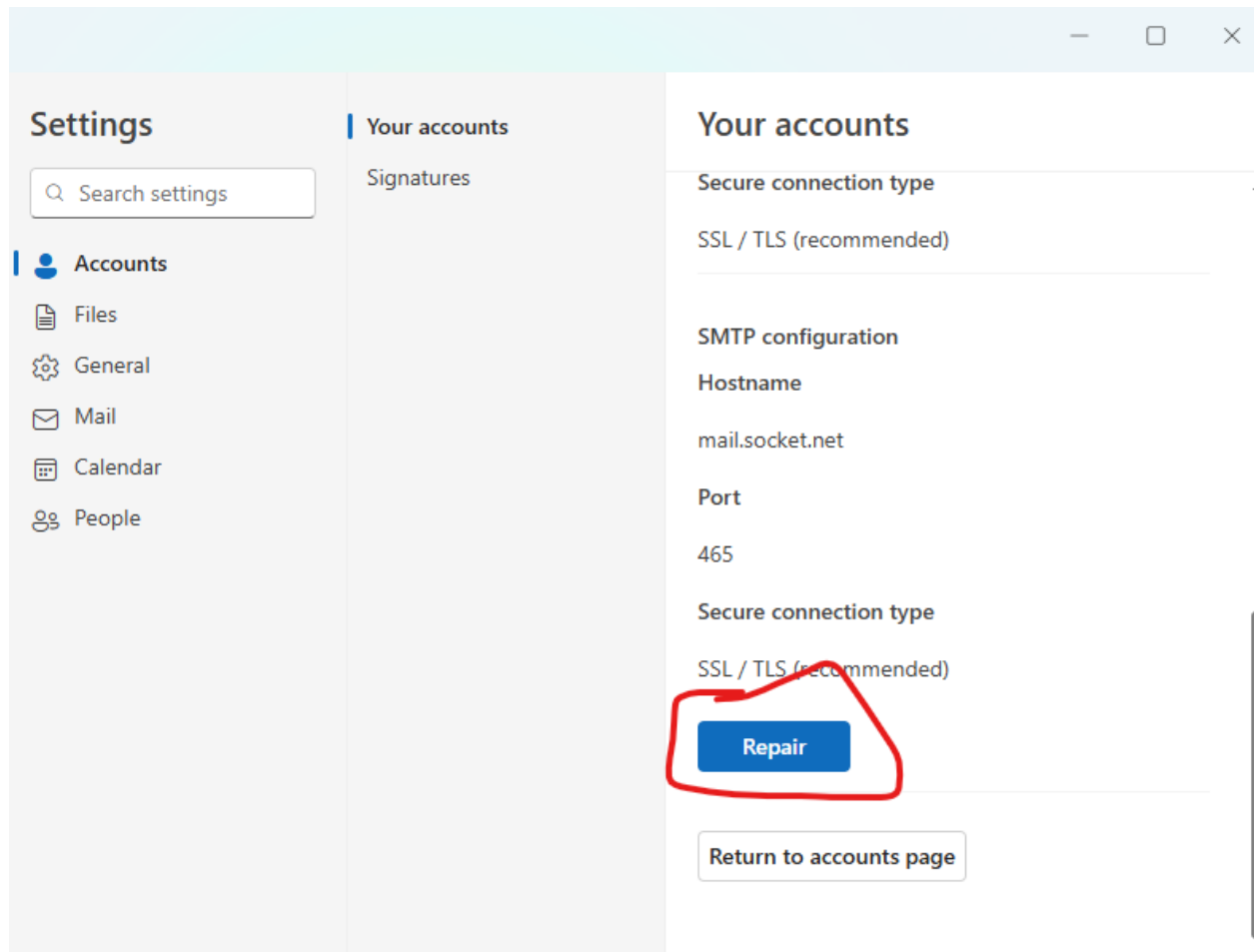
1) Open Outlook and go to settings > accounts



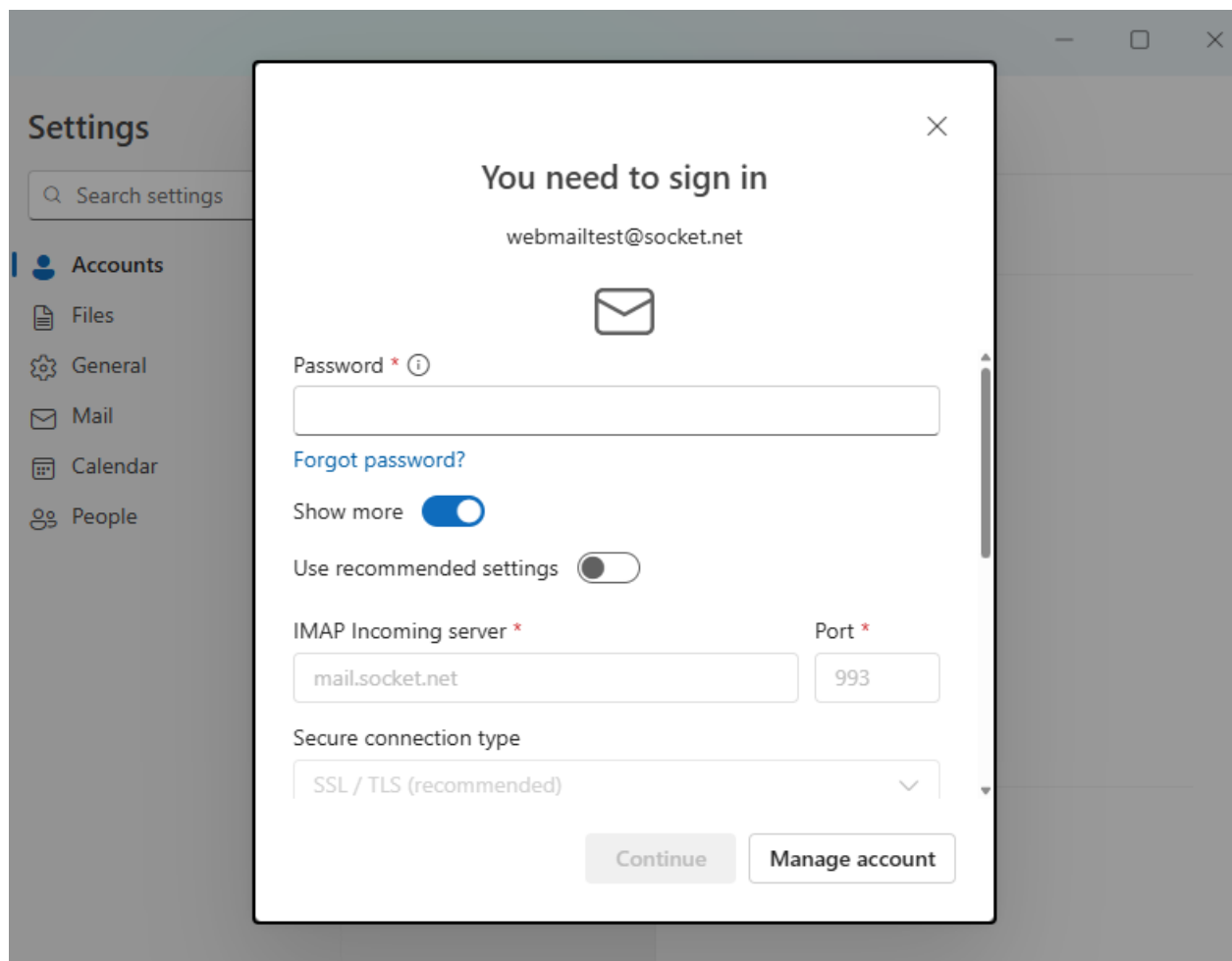
2) Select your socket.net email account and click "manage"



3) Scroll down to "IMAP/POP Configuration" and click 'repair'



4) From there, you should be able to enter the same server information listed above in this document.



5) Hit “Continue” when done, and Congratulations! Your socket email should be ready for use on Outlook (new)